



Newsletter of the Lahainaluna High School Foundation

Ka Leo O Ke Kahua O Lahainaluna

Grants & Projects Continue to Improve Lahainaluna

Even though the campus was mostly closed to having students on campus during the last school year, the Foundation’s Grant Committee was busy with continuing our mission of providing opportunities and resources to the school.

Susan Yap has been the chairperson for the last decade and has been an important part of the process, assisting in the evaluation of each grant application and, along with the Grants Committee and Board, recommending the funding for each request.

The Foundation has awarded approximately \$62,000 during the past two years.

Health Services Pathways/ PE Hale Ola Pono Wellness Center

In early 2019, Health Services Core Instructor Malia Shimomura and Cliffane Casco (PE-10), came to the Foundation seeking support for their Hale Ola Pono Wellness Center, a student run fitness center and clinic. Students manage each other as a student Clinic Administrator oversees a medical receptionists that checks in patients (PE students and teachers) and provides health assessments that includes vital signs and anthropometric measurements. The center originally operated in P16, but it became clear that the facility was



Student taking vitals in Wellness Center



Students provide sweat equity for the Wellness Center



Some of the new window a/c units in Hale I Luna Bldg.

inadequate for their needs.

With funding from the Foundation, and sweat equity provided by Malia, Cliffane, and their students, the back of the old girl’s locker room was converted to a suitable facility.

The ultimate goal is to collaborate with health care professionals and allow the facility to also serve the community. We’d also like to see the students in charge of each side of the wellness center (fitness and clinic) work collaboratively to best serve patients and clients. Unfortunately, when the COVID19 restrictions took place, the clinic closed down and construction has been placed on hold.

Heat Abatement Program

The Lahainaluna High School heat abatement project began as a discussion back in 2019 and was initiated in earnest in 2020. In addition to fully providing both “I” and “J” buildings with new AC units, “J” building also received a full electrical upgrade to run all units on a dedicated 220v circuit, thus avoiding the electrical drain that they were experiencing.

(cont on next page)

Mission Statement

E kako’o I ko Lahainaluna ma o na mea e ho’olako pono ai
 SUPPORT the Lahainaluna school community by providing opportunities and resources
 E kokua I ka malama ‘ana a me ka ho’omau ‘ana i ko Lahainaluna mo’aukala, kona mo’omeheu, a me kona mau laina
 ASSIST in preserving and perpetuating Lahainaluna’s unique history, culture and traditions

(cont from pg 1)

To our surprise, “I” building had been upgraded sometime in the past so we were able to utilize that service for this building and remove all of the 110v AC unit that were contributing to their occasional power failures.

In addition to these two entire buildings, units were installed in the following: shop classrooms S1-S2-S3 as well as the teacher’s café eating area, the physical therapy testing room in the athletic trainer’s office, the culinary arts room, the copying room, the Alternative Learning Center and every portable that needed an additional unit to assist with their previously installed heat abatement equipment. For the portables, we purchased some units while others that were removed when we upgraded to larger, improved units, were repurposed. All of these were completed by early 2021.

To date, we have purchased 39 units and installed over 50.

Recently, the Old Lahaina Luau partnered with the Foundation to provide funding for air conditioning units in “AA” Building. The OLL is funding the purchase of 9 units, and the Foundation will fund the installation.

Lahainaluna Cemetery

The Lahainaluna Cemetery appeared on our radar after the great (x5) grandson of Sheldon Dibble, visited his grave in 2017 and was shocked at the condition of this historical site. Sheldon Dibble, a missionary, came to Maui in 1836 and was a teacher at Lahainaluna. Dibble, his wife, and 18 month old son are buried at Lahainaluna.

Work on the site began in July 2017, with volunteers from the Foundation, the Lahaina Canoe Club, and others.

Most of the work done has been accomplished by volunteers, but on occasion, some of the work was hired out.



The cemetery in 2017



August, 2017, aerial view after installation of walkway landscape cloth



2021 Drone photo courtesy Blake Ramelb ('13)

Cemetery (cont)

Early work included weed eradication in and around the cemetery, painting the posts and chains, installing a gravel walkway and erosion mitigation.

The project was spearheaded by the Foundation’s Arts, History & Culture Committee Chair, Susan Yap and the Executive Director, Jeff Rogers.

In late 2019, Lindy Tratchel responded to a public appeal for volunteers. Lindy’s uncle, John Akiona, is buried at Lahainaluna,

Cemetery (cont)

and his grave was in terrible disrepair. Lindy not only took on that grave as her pet project, but has continued to come back and make significant improvements to the site.

Early College Education

The Early College (Dual Credit) Program is available for all Lahainaluna students, with particular attention to first generation and socio-economically disadvantaged students. It is the goal of the program to give students an opportunity to experience college level studies and credits which can be used towards a degree after high school.

The program is partly funded by the State, but participating schools need to provide the remaining funding (15%).

Some of the classes made available have included English 100, Math 115, Psychology 240, Computer Science 100, Sociology 100 and Auto Tech 100.

Other grants that were awarded within the past few years include bottled water for D-Building due to rusted pipes, new building signs were recommended by the Archive Committee, a used golf cart for the Custodial Department, and the Science Olympiad.

Passive Fundraisers Help the Bottom Line

Fundraising is always a challenge, and it was made even harder during the pandemic. We are always on the lookout for passive fundraisers....ways to generate revenue without having to dip into the pockets of our donors.

(continued next page)

Maui Looks Forward to the 2022 Sentry Tournament of Champions

The 2022 Sentry Tournament of Champions, returns to The Plantation Course at Kapalua from January 5-9, will mark Maui's 24th year hosting the event as it kicks off the calendar year with one of the most exceptional fields in golf, featuring only winners from the previous year on the PGA TOUR.

As the event approaches, the Tournament will continue to work closely with the PGA TOUR, local and state governments, and leading health officials to deliver a successful tournament in a safe and healthy manner to the Maui Community. Tickets are now available for the 2022 event with several options for all fans.

Last year's edition featured an impressive field, but perhaps an even more impressive community impact. The 2021 event raised more than \$500,000 for more than a dozen Maui non-profit organizations, marking the largest charitable impact figure raised for the local community since 1999.

As the only event on the PGA TOUR the Tournament is one of the most 2022 field is shaping up to be one of pions like Justin Thomas, Jordan Spi-Reed, and current TOUR stars Collin Jon Rahm.



schedule to feature only winners, exclusive fields in all of golf. The the best yet, featuring past cham-eth, Xander Schauffele, Patrick Morikawa, Patrick Cantlay and

The Sentry Tournament is a week for the best PGA TOUR players in the that makes the event possible. The than \$7.5 million generated for local Maui communities since 1999, including a longstanding relationship with the Lahainaluna High School Foundation.

the people of Maui to celebrate world, and the vibrant community tournament is proud of the more

This year marks another exciting installment of the Sentry Tournament of Champions with some highlights of the week including Ohana Day, the Aloha Kick-Off prior to the first tee time on Thursday, and Aloha Friday with players and fans alike encouraged to wear island attire. There is truly no sporting event like the this tournament, and we're excited for January! Fans are encouraged to follow us on Facebook (SentryTOC), Twitter and Instagram (Sentry_TOC). For more information about the tournament, please visit SentryTournamentOfChampions.com.

Passive Fundraising (cont)

One of our earliest forays into passive fundraising was with Melaleuca. We were approached by Jun Arconado & Julie Acio ('89) back in 2009 about an opportunity through the wellness company that they represented. Independent representatives could designate a portion of their sales to non-profit organizations. We became a beneficiary in 2010 and have received more than \$10,000 in donations since then.



In 2015 we partnered with Amazon, as a beneficiary of their philanthropic program AmazonSmile. Through their gifting program, when members designate the Foundation as their beneficiary, we receive a small percentage of the retail price of eligible items. Our first quarterly donation in 2015 was \$10.75. Our most recent payment was \$138.00!! The AmazonSmile program illustrates how even small amounts, multiplied, can have significant results.

Most recently, we partnered with Maui Ku'ia Estate Chocolate, a local company that produces fine chocolate. The company is unique, not only in its product, but because it donates 100% of its net profit to Maui non-profit organizations. We joined the Chocolate Laulima program in September, 2020 and have seen \$4,600 in donations from it. Visit the Chocolate Laulima program on their website for more information <https://mauichocolate.com/>



Lahainaluna High School Foundation Scholarship Program

Mahalo to all our donors and congratulations to all the scholarship recipients



Lance Abut was awarded the \$1,000 Michael N. Nakano Leadership Award

Alexa Acosta was awarded the \$1000, renewable, Shelton 'ohana Scholarship



The \$1,000 Maui County Federal Credit Union and \$2,500 Steven R Strong, M.D., Memorial Scholarships were awarded to Abigail Akamine

The \$1,000 Andrew Kutsunai Future Teacher, \$500 Lahaina Hawaiian Civic Club and \$2,500 Eugene Takenaga Scholarships were awarded to Ashley Akamine



The \$1,000 Lahainaluna High School Foundation Scholarship was awarded to Jesabel Aliban

Elizabeth Ankney was the recipient of the \$1,000 Bank of Hawaii Scholarship



Cassia Arnold was awarded the \$1,000 Brian Kelly Memorial and \$1,000 Lahainaluna High School Foundation Scholarships

Caitlin Raquel Lizada Baclay was the recipient of the \$1,000 Ebrahaim Albert Gabbay, M.D., Memorial and \$500 Lahainaluna High School Scholarships



A \$1,000 Red Phoenix Scholarship was awarded to Jorden Beam

Kendall Beam was awarded the \$1,000 H & K Takenaga Legacy Scholarship



The \$2,500 Ted Toshikiyo Memorial and \$1,000 Maui County FCU Scholarships were awarded to Manuel Castro

A \$500 TS Restaurant and \$1,000 Maui County FCU Scholarship was awarded to Liam Chadli



Jumar Dela Cruz was awarded the \$1,500 renewable, Betty & Roy Sakamoto Scholarship

The \$1,500 Charley Pride Memorial Scholarship was awarded to Akira Foreman



The Lahainaluna High School Foundation has awarded \$1,883,000 since 2002!!



Sean Freitas was awarded the **\$2,000 Kihajiro J Hotta Memorial and Lahainaluna Boarders Association -Chief Kukahiko Memorial Scholarships**

A **\$1,000 Class of 2001 Scholarship** was awarded to **Taai Galoia**



Kahealani Garcia has been awarded the **\$1,000 Alfredo "Fred" Sarian Memorial Scholarship**

A **\$1,000 Red Phoenix Scholarship** was awarded to **Samuel Kahaialii**



The **\$1,000 Blaze Kalilikane Memorial Scholarship** was awarded to **Nalani Kirkman**

Evan Koyama was the recipient of the **\$1,000 Ka'anapali Land Management Scholarship**



A **\$1,000 Lahainaluna High School Foundation Scholarship** was awarded to **Kalalealea Mirkovich**

Patricia Morales was awarded the **\$1,000 Sammy Kadotani Service Award.**



A **\$1,000 Maui County FCU Scholarship** was awarded to **Dawson Nolasco**

The **\$1,000 5A Rent-a-Space Scholarship** was awarded to **Anthony Nunez.**



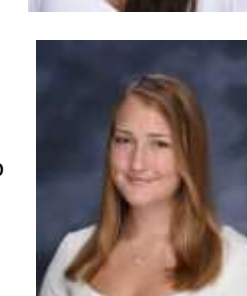
Ariana Pacleb was chosen to receive the **\$1,000 Vaughn & Luly Baker** and a **\$500 Lahainaluna High School Foundation Scholarship**

A **\$1,000 Class of 2001 and \$500 TS Restaurant Scholarship** was awarded to **Shaelia Pascua**



The **\$1,000 Boss Frog's Scholarship** was awarded to **Kulia Phillips.**

A **\$1,000 Red Phoenix Scholarships** was awarded to **Malia Pitzer**





A \$1,000 Maui County Federal Credit Union and \$500 TS Restaurant Scholarship was awarded to **Avrilyn Quimangan**



Erika Ramos Lagunas was awarded the \$1,000 Territorial Savings Bank-Lahaina Branch Scholarship



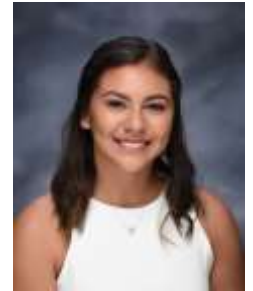
A 1,000 Lahainaluna High School Foundation Scholarship was awarded to **Sosefina Riley**



A \$1,000 Class of 2001 Scholarship was awarded to **Hookipa Sakalia**.



A \$500 Lahainaluna High School and \$500 TS Restaurant Scholarship was awarded to **Rebecca Segura**



Laieikawai Tancayo received the \$1,000 Maui Kapalua Charities Scholarship



A \$500 Lahainaluna High School Scholarship and a \$500 Bonnie Ann Fijal Memorial Scholarship were awarded to **Kiana Tuttle**.



The \$1,000 Maureen Setsuko Ariyoshi Memorial Scholarship was awarded to **Victoria Vera**.



Charlise Wurts was awarded the \$1,000 Phoebe Toshikiyo Takenaga Memorial Scholarship



The \$15,000 renewable, Shigeru & Toyoko Ichiki Scholarship was awarded to **Kokoro Yamazaki**



Cael Yasutake was awarded the \$5,000 renewable, Makana Aloha Foundation Scholarship



A \$1,000 Dr. James Kumagai-Andrew Kutsunai Teacher's Scholarship was awarded to **John Ho'omanawanui**



A \$1,000 Dr. James Kumagai-Andrew Kutsunai Teacher's Scholarship was awarded to **Teva Medeiros**

Receiving renewals were: Ichiki Scholarship: Challys Pascual, Stacia Eng, Ryan Agbayani, Makana Aloha: Rory Delaney, Hannah Brock, Eva Olson. Betty & Roy Sakamoto: Shanel Mangaoang, Reece Pascua, Lily Tran. Shelton 'ohana: Rory Delaney, Briana Bandy, Nicole Slusser

MAHALO TO OUR DONORS

Gifts received from: November 1, 2020—October 31st, 2021

Classification reflects the lifetime cumulative amount



Hoku o ka Pakipika 1,000,000 & above

Sue D. Cooley

(In Perpetuity)

Luna Ali'i \$500,000-\$999,000

Sentry Tournament of Champions

David Malo \$100,00 to \$499,000

Shoma Hotta

Shigeru & Toyoko Ichiki Scholarship

The Makana Aloha Foundation

Pu`u Pa`u Pa`u \$1,000 to \$49,000

AAAAA-Rent-a-Space

Susan Antoku ('60)

Tanya Arakawa ('68)

Reed Ariyoshi

Eric Paul Arquero ('01)

Luly Baker

Audrey Baybayan,

In memory of Chad Kalepa Baybayan

LBA-Chief Kukahiko Memorial

Bank of Hawaii

Selma Chung ('54)

Annie Toshiko Conant ('70), *posthumous*

George Enriques ('52),

In memory of Claudette Enriques

Suzanne Gabbay

Hanson Bridgett, LLP

Wayne Hirata ('67)

Harold Hirokane ('54)

Henrietta Hudson ('37)

Jean Hurchalla,

In memory of Brian Kelly

Vernon Ichimura & Sharon Sato ('70)

Ka'anapali Land Mgmt.

Glenn Kadohiro, DDS

Kaylen Kadotani ('04)

Lena Kanemitsu ('61)

Phil & Lynn Kasper

Kapalua Maui Charities

Robert & Sakae Kawaguchi ('48)

Anthony Kikuyama ('53)

Pu`u Pa`a Pa`u \$1,000 to \$49,000 (cont.)

Barbara Kukahiko,

In memory of Chad Baybayan

Dr. James Kumagai ('52)

Andrew Kutsunai

KYO

Lahaina Hawaiian Civic Club

Lunaville Ohana

Betty Matsuno Lum ('55),

In memory of Larry Hu, Larry Kurosawa, Larry Tengan,

In memory of Dianah Rickard Desa ('55)

Gary Masuda

Keith Masuda ('65),

In memory of Craig S Masuda, Jr.

Wayne & Aurora Matsuda

Robert Matsumoto

Maui County FCU

Maui Ku'ia Estate Chocolate

Ann Mikami

Jyun & Mary Mishima ('70)

Jean Miyahira ('58)

Stan & Jean Miyahira

Lyle Miyasaki ('80)

Na Hoalaoha Ekolu

Roger Nakamura ('66)

Michael M Nakano

Edwin & Penny Okubo ('63)

Antoinette Polancy

Jeanne & Jim Riley

Gary Robert

Roger & Lois Ross

Arthur & Jessie Sakai ('55)

Betty & Roy ('60) Sakamoto

Seattle Foundation

Rob & Louisa ('73) Shelton

Gary Shibuya ('64)

LeeAnn Shigezawa ('73)

Sharon Shimabukuro ('65)

James & Carole Spaulding

Sohny Strong

H & K Takenaga Advised Funds

Thelma Tengan ('48)

Territorial Savings Bank-Lahaina Branch

James ('50) & Dorrie Tobita

TS Restaurants

Whaling Port, LLC

Susan Ichimura Wilson ('64)

Torchbearers \$500-\$999

Larry Baker
Annie Conant ('70)
AJ & Butch Cregan
Alvin & Martha Fukunaga ('59)
Claire & Michel Furukawa ('54)
Mike & Sandie Gallagher
Nadine Hoffman ('94)
Cary & Sharon Honda ('71)
Arlene Inamine ('58)
Melanie Ito
Doris Ito ('59)
Deanna Kahoalii ('66)
Craig & Jan Kakiuchi ('76)
Ann Hideko Katahara
Eiichiro Kuwana,
In honor of Betty & Roy Sakamoto
Paul & Margaret Lansky
Harold & Irene Lusano ('58)
Dorothy Makekau ('55)
Blossom Perry
Sandra Ross ('66)
West Maui Community Task Force
Edwin Yamaguchi ('67)
Susan Yap

Imua \$100-\$499

Bobby Abilay
Jacob Ah Sing
Leticia Allen
Lucretia Ancheta
Andrea Anderson
Janet Andrews
Karen Aotaki (78)
Donald Bourassa
Andrew Davis
Patty Day Perkey
Kelcy Durbin
Joseph Imai ('54)
Don & Mary Jackson
Geri Kaita
Lori Kaufman
BJ & Charlie Kelly
Amy Kennett
Robert Kovach
Eiichiro Kuwana
Fely Matinez ('68)
Sue & Denny McCoy,
In memory of Vaughn Baker
Luanna & Peter McKenney
Frederick Meyer
Norman Morinaga ('59)
Glenn Mukai ('64)
Ken & Joyce Perko
Chad & Edna Resari
Jane Sakuma

Imua (cont.)

Ellen Sciulli
Sharyl Seino
Mae Shimabuku ('45)
Glenn Shishido ('72)
Kathie Stone
Charmaine Tavares
Jaime Tengan (79)
Evelyn Toba ('55)
Geraldine Vasper ('52)
Edwina Wilson Snyder
Liana Yamamoto-Orlando & Leina Yamamoto,
In memory of Clarence Archie Yamamoto ('52)
Kenneth Yonamine ('63)

Pride & Spirit \$1-\$99

Pamela Cole,
In memory of Dianah Rickard Desa ('55)
Herb & Dee Coyle
Marcia Cromartie
Kaleolani Joanna DeSa,
In memory of Dianah Ann K Rickard ('55)
Cindy Holmes
Elsie Makekau
Cheryl Nelson
Ken & Julie Sadang
Janice Sanders,
In memory of Vaughn Baker
Lillian Suter,
In memory of Chad Baybayan
Constance Tangonan
Ynez Tascott ('56)
Uilani & Keith Todd
Leiane Yamamoto
Lester Yano & Estelle Chun

In-Kind Giving

Clifton Akiyama ('62)
Bkreative Hawaii
Peggy & Peter Preuss
Russell Yamane & Associates CPAs, Inc.

Legacy Giving

The following either directed donations after their passing, or have indicated that they will give through their wills or trusts.

Kenneth Nohealani Sharpe
(6.30.34-11.16.13)
Harold P.K. Wong ('43)
Gloria Gorter ('67)
Annie Toshiko (Iwamura) Conant ('70)

If you made a donation to LHSF between Nov. 1, 2020 and Oct. 15, 2021 and your name isn't listed, please contact the Executive Director at the phone/email listed on the back. Also, please notify us if there is a correction needed for spelling, grad year etc.. Remember, listings are done according to their CUMULATIVE donations. Our apologies if we missed your contribution.



US POSTAGE PAID
non profit
Mail ed from
zipcode 96761
Permit no. 5

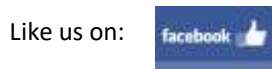
PERPETUATING THE TORCH OF EXCELLENCE

P.O. Box 11617
Lahaina, HI 96761
Phone: 808-661-5332
E-mail: LHSFoundation@hawaiiantel.net
www.lahainalunahighschoolfoundation.org

Return Address Requested

Board of Directors
Mark Tillman -President
Blaine Bernades -Vice President
Lisa Francis—Treasurer
Myrna Ah Hee—Secretary
Joel Navarro
Betty Sakamoto
Rob Shelton
Susan Yap

Staff:
Jeff Rogers—Executive Director
Bill Violette—Bookkeeper



You Can Help Perpetuate the Torch of Excellence...

The Lahainaluna High School Foundation is a non profit, 501-c-3 organization (FEIN#99-0748748), founded by a group of LHS administrators, faculty and community member. Its mission is to support the Lahainaluna school community by providing opportunities and resources and to preserve and perpetuate Lahainaluna’s unique culture, history and traditions.

There are **MANY WAYS** that you can help and continue **to MAKE A DIFFERENCE**. In-kind contributions & volunteering help make a positive impact, as do monetary donations which can be directed to the areas of your choice, or wherever the need is greatest. Unrestricted donations are applied to our Charity Walk efforts for a greater yield.



You can donate to the Foundation when you shop at Amazon!! Amazon will donate part of your purchase (.5%) to the Foundation. Simply sign up for **AmazonSmile** and designate the Foundation as your charity.

We will continue to offer **Brick Pavers** and **Bleacher Sponsorships** as a way to support the Sue D. Cooley stadium at Lahainaluna.

The **Scholarship awards** continue to grow and aid students seeking to further their higher education and vocational training. We have distributed more than \$1,883,000 in scholarship awards since 2002.

The Foundation has also awarded more than \$1,350,000 towards **Grants and Sponsorships**.

Consider making a gift, no matter how much or how little. Contact the LHS Foundation for more info. All contributions are appreciated! I MUA, Lahainaluna! MAHALO!